



A Breakdown of the Piano

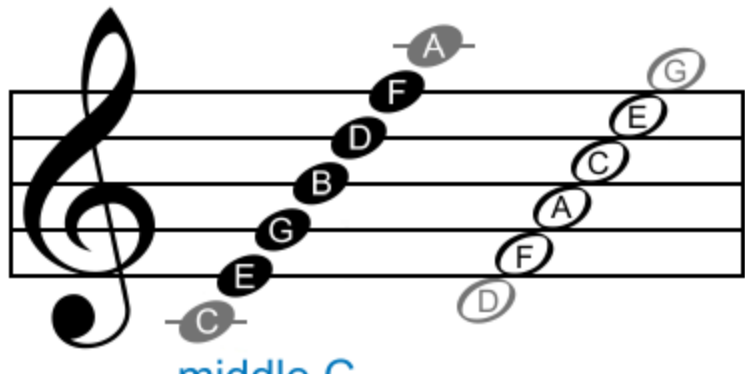


Chris Lavidas, Chief Music Officer
847.749.0137 Office
847.815.5062 Mobile
chris@breakinggroundsinmusic.com
www.breakinggroundsinmusic.com

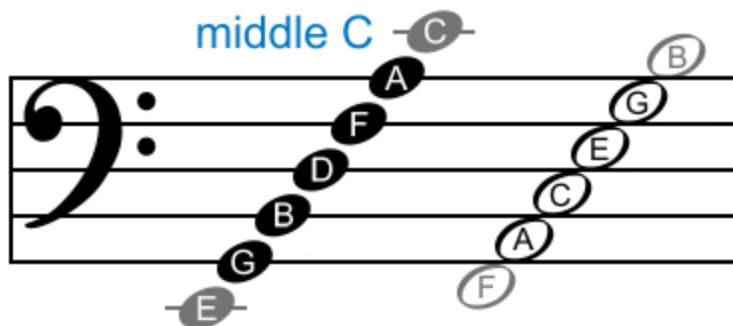
What is it?

The piano is a musical instrument played by means of a keyboard. It is one of the most popular instruments in the world. Pressing a key on the piano's keyboard causes a padded (often with felt) hammer to strike steel strings. Each key on a piano creates a different note.

Here are the notes that a piano can play:

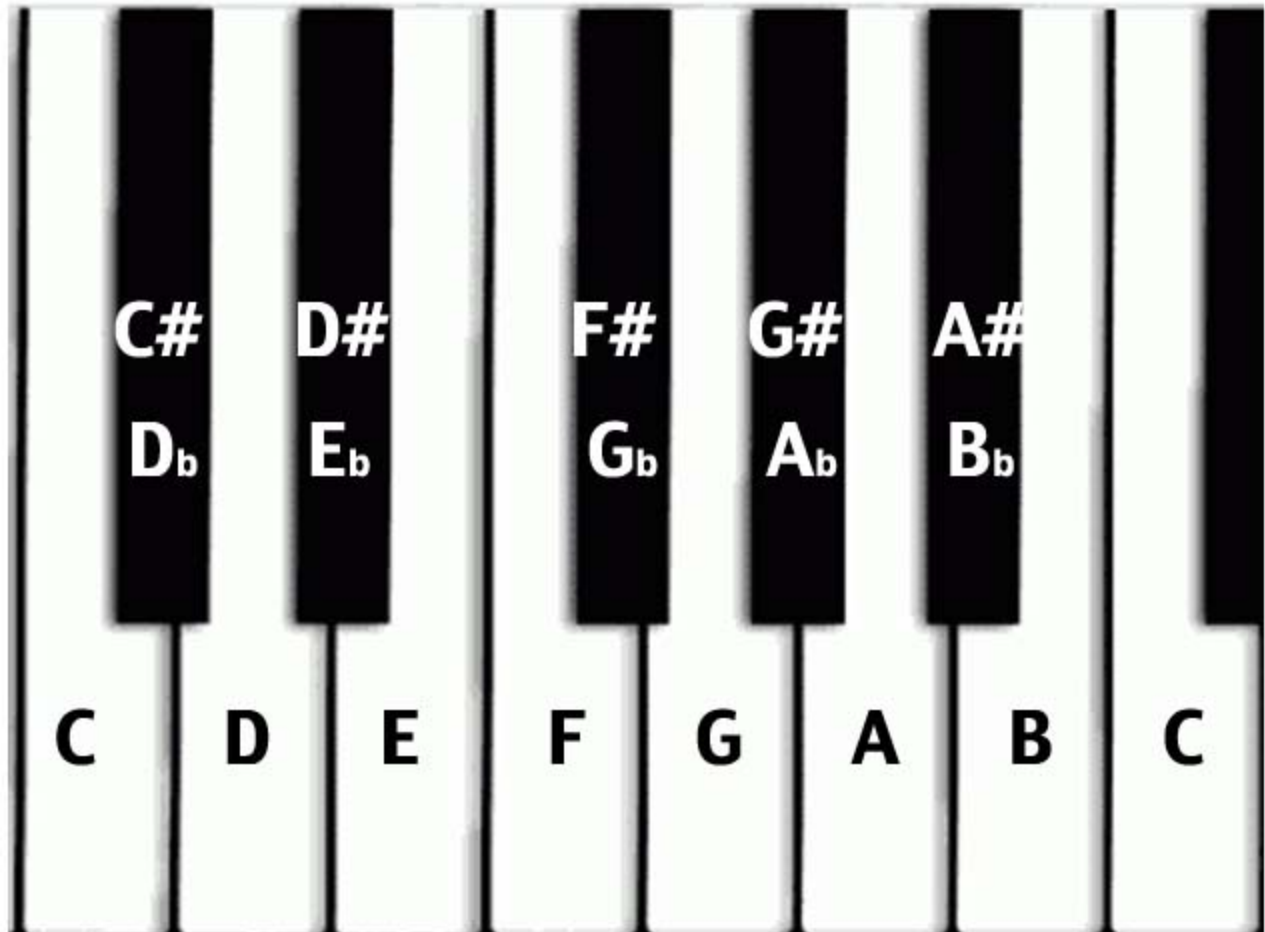


© Brandy Kraemer





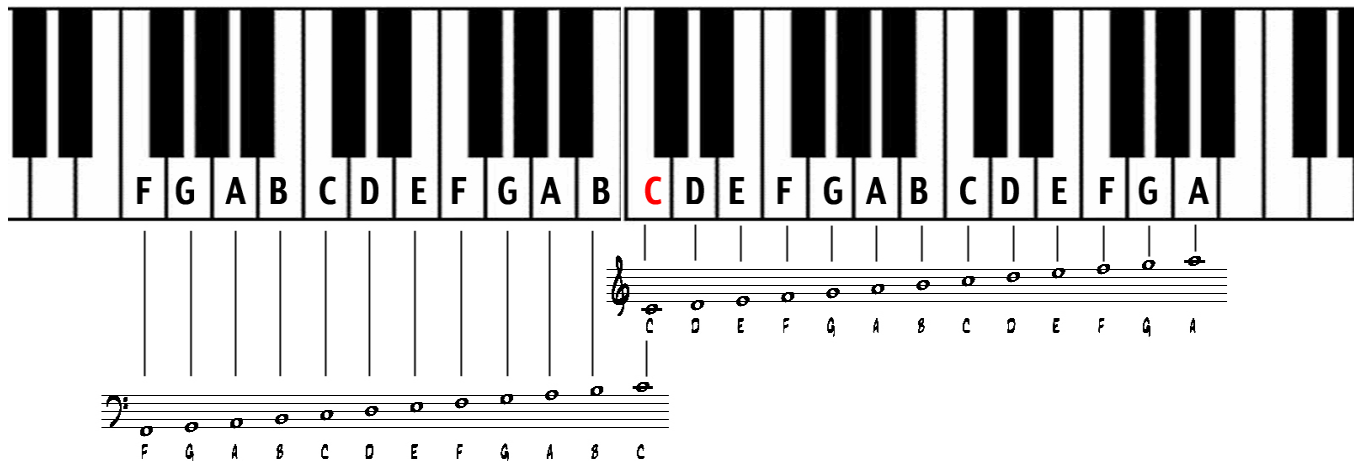
© Brandy Kraemer

Each note on the piano also has a flat and sharp. A flat is on the left of the note, and a sharp is on the right of the note. The flats and the sharps are the black keys.



Chris Lavidas, Chief Music Officer
847.749.0137 Office
847.815.5062 Mobile
chris@breakinggroundsinmusic.com
www.breakinggroundsinmusic.com

For everything on the left of the middle C (the red C),
 bass clef is read. () For everything on the right, treble
 clef is read. () Bass clef is usually played with the
 left hand while treble clef is usually played with the right
 hand.



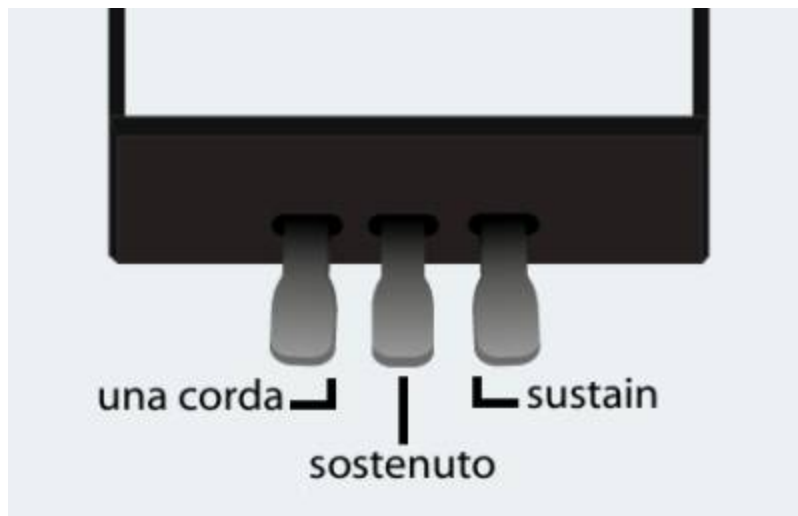
Chris Lavidas, Chief Music Officer
 847.749.0137 Office
 847.815.5062 Mobile
chris@breakinggroundsinmusic.com
www.breakinggroundsinmusic.com

A piano also usually has three pedals (the una corda, sostenuto, and sustain).

The una corda primarily modifies timbre and color of the tone, not just the volume of the tone.

By using the sostenuto, a pianist can sustain selected notes, while other notes remain unaffected.

The right pedal, the sustain, raises all the dampers off the strings so that they can continue to vibrate and sound after a note on the keyboard has been released.



Chris Lavidas, Chief Music Officer
847.749.0137 Office
847.815.5062 Mobile
chris@breakinggroundsinmusic.com
www.breakinggroundsinmusic.com

